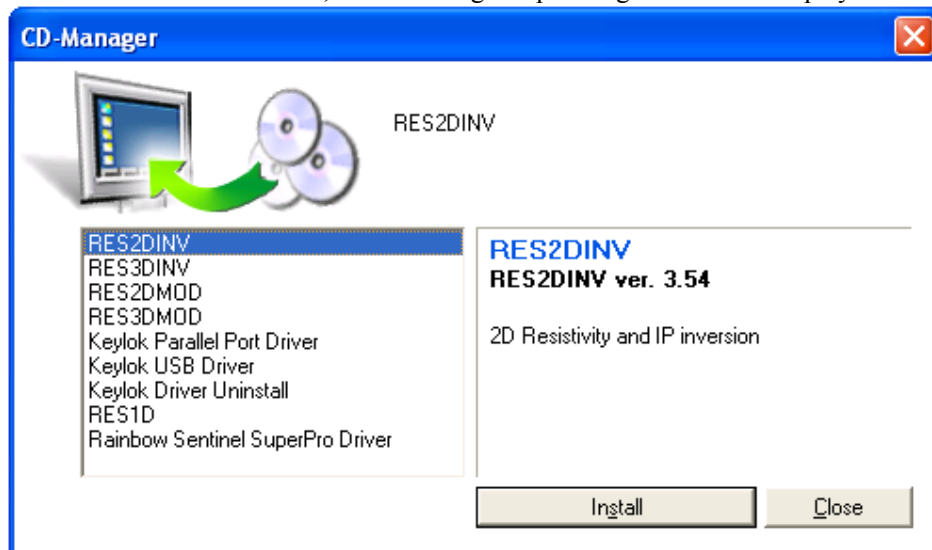


## CD-ROM contents and installation instructions for RES2DINV and RES3DINV

### Installation

When the CD is inserted in the CD drive, the following setup manager should be displayed



Click the appropriate item in order to install RES2DINV program; followed by the RES3DINV, RES2DMOD and RES3DMOD programs. If you have the Keylok USB dongle, click on the 'Keylok USB Driver' to install the driver for the dongle. Select the 'Keylok Parallel Port Driver' only if you have the parallel port dongle.

### CD-ROM contents

In the CD-ROM, the various softwares are arranged in the following folders.

RES2DINV - Contains the RES2DINV software set-up file.

RES3DINV - Contains the RES3DINV software set-up file.

RES2DMOD.DOS and RES2DMOD.WIN - Contains the free RES2DMOD software package and manual for DOS and Windows.

RES3DMOD - Contains the free RES3DMOD software set-up file.

RAINBOW\_SYSTEM\_DRIVER - Contains the driver for the Rainbow Technologies hardware key (dongle).

KEYLOK\_SYSTEM\_DRIVER - Contains the driver for the Keylok hardware key (dongle).

LECTURE\_NOTES - Free lecture note on 2D and 3D electrical imaging in PDF format.

ABSTRACTS - Extended abstracts of a few papers on electrical imaging by M.H.Loke.

SHAREWARE - Contains the GWD text editor, Neopaint and Paint Shop Pro bit-mapped graphics editing programs; and also free Adobe Acrobat Reader, Power Archiver and Power Desk 4, Slicer-Dicer programs.

WIN\_Updates - Latest versions of RES2DINV.EXE, RES3DINV.EXE, RES2DMOD.EXE and RES3DMOD.EXE for the Windows 98/Me/NT/2000/XP operating systems.

HELP\_FILES - Contains updates for the Windows Help files for RES2DINV, RES3DINV, RES2DMOD and RES3DMOD.

MANUALS - Contains updates for the manuals in PDF format for RES2DINV, RES3DINV, RES2DMOD and RES3DMOD.

For users who have already installed the RES2DINV and RES3DINV software on their computers, you need not reinstall the programs. To update the software, just copy the RES2DINV.EXE and RES3DINV.EXE files into the folders/subdirectories where you have installed the programs so that they will overwrite the older versions. The Keylok dongle will only work with RES2DINV ver. 3.46 or later and RES3DINV ver. 2.06 or later.

**Windows Vista Instructions : See next page.**

For the Keylok dongle, you will need to install the drivers needed by the dongle copy protection system. To install the driver, run the INSTALL.EXE program found in the KEYLOK\_SYSTEM\_DRIVER folder or subdirectory of the CD-ROM.

For current users with the older Rainbow Sentinel Superpro dongle, install the driver by running the RainbowSSD5.39.2.EXE program found in the RAINBOW\_SYSTEM\_DRIVER folder or subdirectory of the CD-ROM.

From time to time updates to the RES2DINV and RES3DINV programs, as well as the free RES2DMOD/RES3DMOD programs and lecture notes, will be released. The latest versions are available from the following Web site

[www.goelectrical.com](http://www.goelectrical.com)

Please visit the site to ensure that you have the latest versions.

### **Windows Vista**

For Windows Vista, you need to use the driver found in the InstallVistaUSB.zip file in the "KEYLOK\_SYSTEM\_DRIVER\Vista Driver" folder in the CD provided. The instructions are given in the "To Install USB Dongle on Vista.pdf" file. Alternatively, you can use the INSTALL.EXE (in the INSTALL.ZIP file) in the "KEYLOK\_SYSTEM\_DRIVER\Vista Driver" folder. This will automatically install the proper drivers for 32-bit and 64-bit versions of Vista.

Under Vista, the program might report there is insufficient hard-disk space, although the drive has many GBs of free space. If this happens, try the following.

First turn off the User Account Control (UAC).

- 1). In the Control Panel, click the icon to open User Accounts.
- 2). Click Turn User Account Control off. If you are prompted for an administrator password or confirmation, type the password or provide confirmation.
- 3). Select the Use User Account Control (UAC) to help protect your computer check box to turn on UAC, or clear the check box to turn off UAC, and then click OK..

Next change the program privilege level.

- 1). Right click on the program shortcut (eg. RES3DINV).
- 2). Click the 'Properties' menu option.
- 3). Next click the 'Compatibility' tag.
- 4). Under the 'Privilege Level' section, check the 'Run this program as an administrator privileges' box. This allows the program to write the temporary files to the hard-disk.

It is also recommended that you disconnect the computer from the Internet while running a long inversion.

### **Other information**

If you have bought the license RES2DINV program only, you can still use the RES3DINV program with a limit of 150 electrodes (15 by 10 grid) for the survey grid. If you have bought the license for the combined RES2DINV/RES3DINV package, you can run both the RES2DINV and RES3DINV programs using the same hardware key (dongle). The limit for the 3D survey grid is about 8000 electrodes for a system with 2GB RAM, which is far larger than most existing 3D surveys.

You should have installed the driver for the Keylok dongle using the CD-Manager program described earlier. For current users with the older Rainbow Sentinel Superpro dongle, please refer to section 2 of the RES2DINV manual concerning the system driver for Windows 98/Me/2000/NT/XP.

In some cases, if the RES2DINV or RES3DINV program does not detect the dongle the first time it starts, just quit from the program, and then immediately start up the program again. It should detect the dongle the second time it starts up.

To get the best performance from the RES2DINV and RES3DINV programs, you should use Windows in the 1280x1024 or higher graphics mode.

You should also turn off the automatic screen savers and computer power management programs as described in Appendix J in the RES3DINV manual.

### **Registration**

Please register by email by using the file REGISTER.TXT provided with the RES2DINV software package. Fill in this form and email it to geotomo@tm.net.my or geoelectrical@yahoo.co.uk.

### **Freeware and Shareware software**

#### **"Electrical imaging surveys for environmental and engineering studies - A practical guide to 2D and 3D surveys" and "Tutorial : 2-D and 3-D electrical imaging surveys"**

This is a set of lecture notes on electrical imaging found in the LECTURE\_NOTES subdirectory of the CD-ROM. The notes are in the form of an Adobe Acrobat PDF file. To view the notes, you need to install the free Adobe Acrobat Reader program. A copy of the set-up files for this program is also provided in the CD-ROM. The Tutorial is a more technical version of the lecture notes.

**RES3DMOD** : A Windows based 3D Resistivity and IP forward modelling program. Please refer to the README3D.TXT file for instructions.

**RES2DMOD** : This is a free 2D resistivity and IP forward modelling program. The user can choose the finite-difference or finite-element method. Both the DOS and Windows based versions are available in the CD-ROM. The manual in PDF format, RES2DMOD.PDF, is also provided.

**FreqEM** : Free 1-D sounding modelling program for surveys with frequency domain loop-loop EM systems such as the Geonics EM-34.

**Paint Shop Pro and Neopaint for Windows** : Two sophisticated shareware programs to edit and manipulate BMP and PCX bit-mapped graphics files. The RES2DINV/RES3DINV programs can save the results in such graphics files that you can edit with the Paint Shop Pro or Neopaint programs, and then embed into your reports using most word processors such as Microsoft Word. The shareware versions of the programs are in the CD-ROM.

**BOXER and GWD text editors** : Two professional level text editors with many powerful features. This is useful for editing data files. They have a useful column block editing mode to delete or copy columns of data. In the CD-ROM is the shareware version.

**NoteTab Light and NotePad++** : A couple of free but useful text editors that can be used as a replacement for the Windows NotePad. They are particularly useful for editing the RES2DINV and RES3DINV DAT files, as well as the RES2DMOD and RES3DMOD MOD files.

**Power Desk 4 and 2xExplorer file manager programs** : A couple of free file management programs. Both have two panels which makes it easy to copy files.

**Power Archiver and Win ZIP file compression programs** : Two powerful commercial file compression programs with many features. The shareware versions are included in the CD-ROM.

**Slicer-Dicer 3D graphics program** : Demo version of a 3D graphics display program. The RES3DINV program can produce a model output file in a format used by this program.

**X2ipi** : Software to edit resistivity and IP data, includes 1D inversion

**CPUZ** : Program to check type of processor. Useful for the new Pentium 4 optimisations in the RES3DMOD/RES3DINV programs.